



COPPER CATALOGUE

POWER THROUGH TECHNOLOGY

WWW.ACINRM.COM

NON FERROUS RECOVERY



With usage spanning 10,000 years into the past, copper has been used by people longer than any other metal.

The processing of recycled copper requires much less energy than the processing of new copper from virgin ore, providing a savings of 85-90% of energy requirements.

DO YOU KNOW THAT
NEARLY **80% OF CU**
THAT HAS BEEN MINED
TO DATE IS STILL IN USE.

In terms of industrial use
copper ranks third behind
iron and aluminum



At ACIN Recycling Metals we are
specialized in non-ferrous and ferrous
integral waste management: **recycling,
transformation and marketing.**

COPPER IS A SPECIAL RAW MATERIAL FOR HIS QUALITIES:

- High thermal and electrical conductivity
- Ductile
- Corrosion resistance
- 100% Recyclable
- Sustainability
- Alloyable metal

SOLID COMPANY WITH 3 PLANTS IN GIRONA.

We possess our own facilities and
machinery which means not only an
increase in production and a higher
level of control of processes, but also
a reduction in delays, costs and
unexpected events.

INTEGRAL MANAGEMENT

We carefully control all
the phases that lead the
way of recycling metals
such as copper.



HANDLING



PROCESSING



TRADING





It has been estimated that an additional 22 megatonnes of copper will be required by 2050 according EU scenarios, that represents only five years of EU current demand.*

There is no difference in quality terms of recycled copper (secondary production) and mined copper (primary production), thus the environmental and high cost of mining copper ores might be drastically reduced.

**THERE IS SO MUCH LEFT
TO RECYCLE, AND AT ACIN
RECYCLING METALS WE
ARE READY.**

* European Copper Institute (Copper as key driver in the energy transition)

Copper is a key driver in the energy transition and our goal is to generate value through the sustainable recycling of copper under a socially responsible and environmentally friendly model that enhances the material recovery in line with the Sustainable Development Goals (ODS):

Reduce, Reuse and Recycle.

**MORE THAN
150.000 TN
OF METALS
PROCESSED
PER YEAR.**



HOW WE WORK

At ACiN Recycling Metals we are experts in the integral management of non-ferrous and ferrous waste: recycling, transformation and commercialization. We have been in charge of one of the most dynamic and reliable companies in ferrous and non-ferrous waste management for almost a decade.

We work permanently according to the LME index (London Metal Exchange Market), the most trustworthy index for the industrial metals market in the world, and the one we use to reference the best prices we offer our customers.

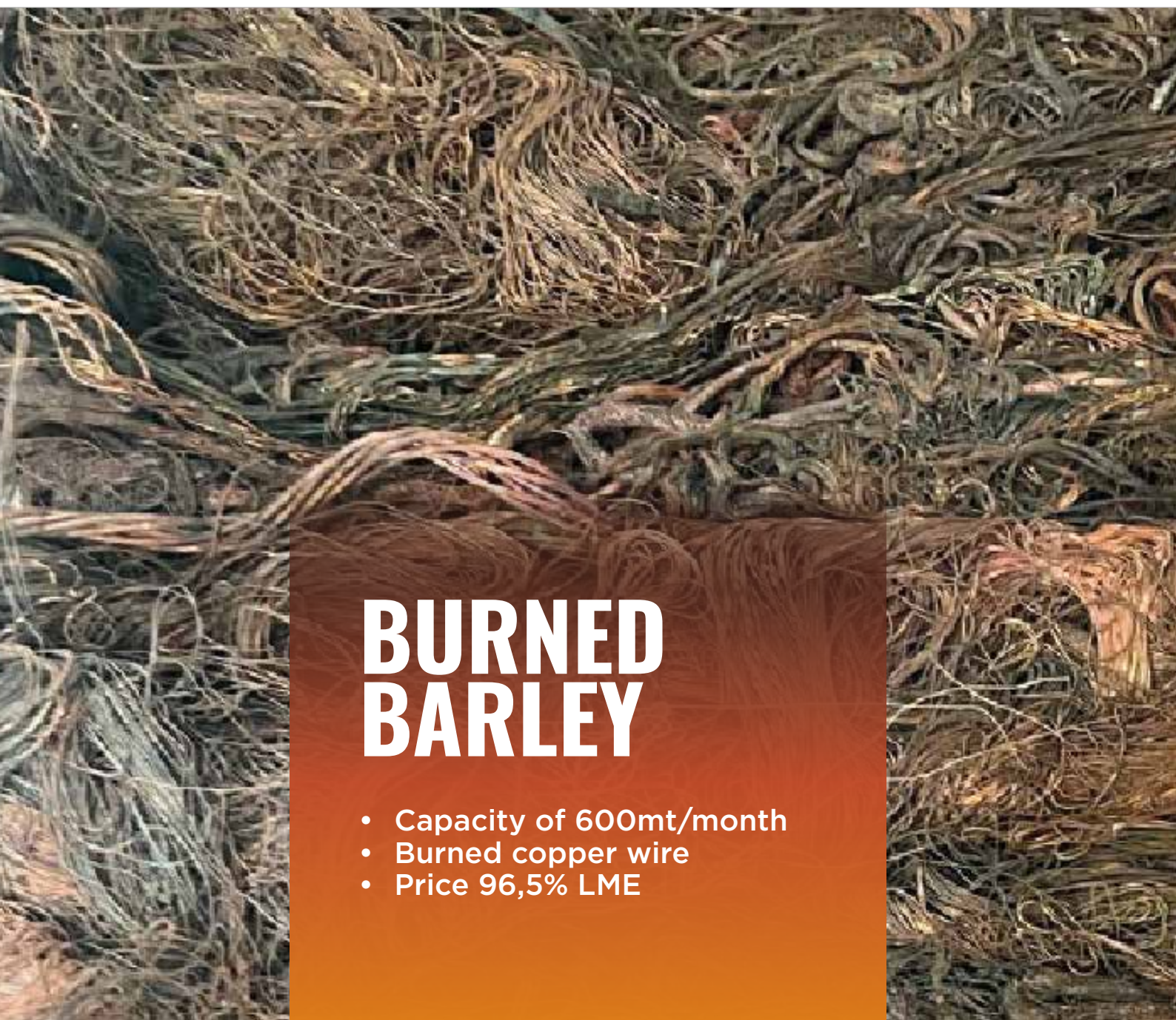
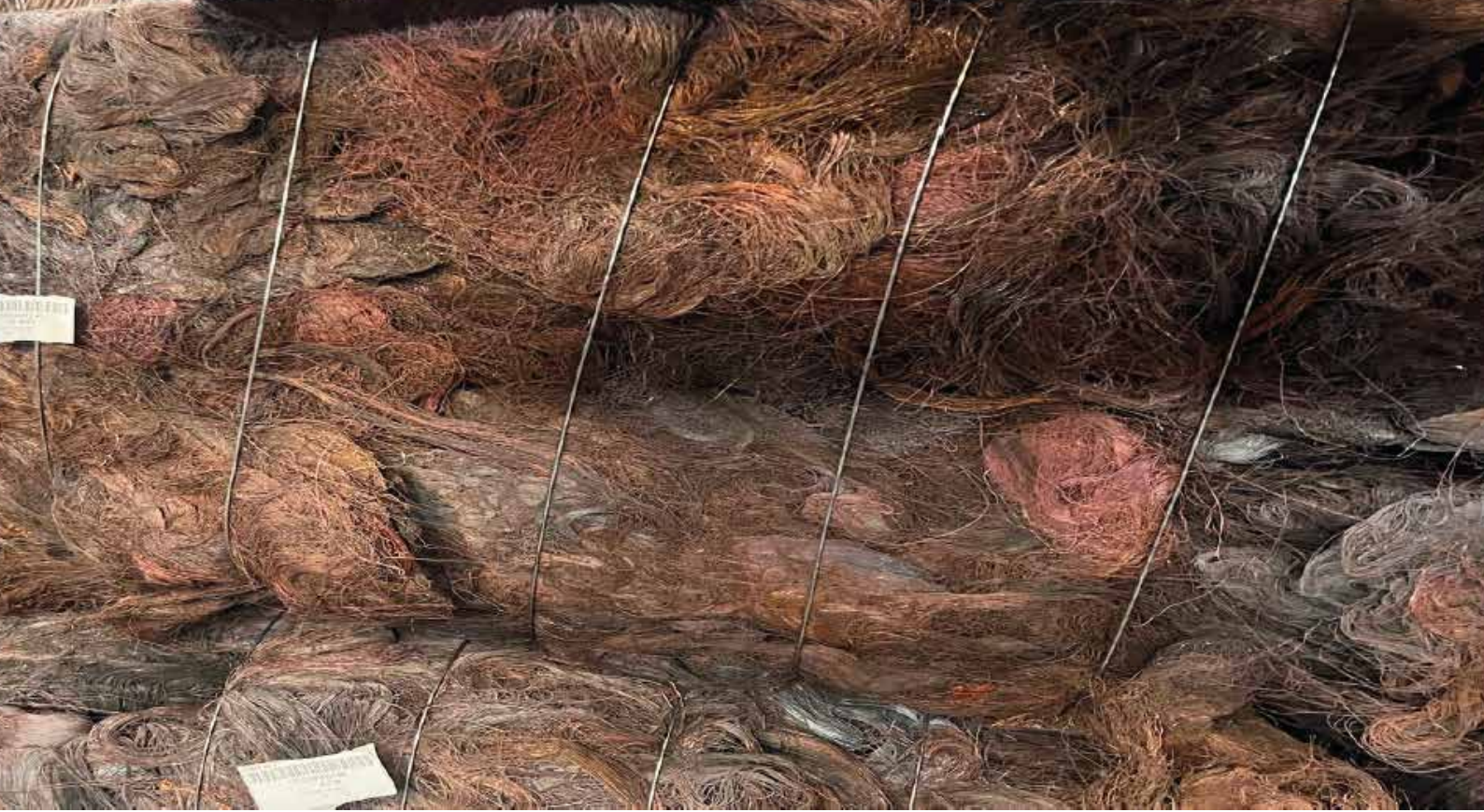
Our proximity and knowledge of the production chain of this market makes us a solvent supplier with the capacity to offer a flexible and competitive response to our customers.





BIRCH CLIFF 95%

- Capacity of 1000mt/month
- Nominal Cu content 95%
- Hydraulically Briquetted
- Price 94,5% LME



BURNED BARLEY

- Capacity of 600mt/month
- Burned copper wire
- Price 96,5% LME



SPANISH MILBERRY

- Capacity of 500mt/month
- Clean, untinned, uncoated, unalloyed
- Loose or hydraulically briquetted
- Price 98% LME





Nº1 COPPER BARLEY

- Capacity of 200mt/month
- Bared, uncoated, unalloyed
- Loose or hydraulically
briquetted
- Price LME Flat

COPPER NODULES A1

- 300 MT/month
- Copper content min 99,9%
- Price 98% LME





COPPER NODULES B

- 800 MT/month
- Copper content min 98,5%
- Price 96.5% LME

Date	Alb.	Net Weight NT	Net Weight LFL	Copper Content (Lab)	Difference	Loss
16/05/2018	2018318/319	25,420	25,326	98.70%	90.20%	51
16/05/2018	2018320/321/322/323	25,920	25,866	98.89%	0.39%	101
17/08/2018	2018325/326/327	25,720	25,806	99.09%	0.59%	152



HONEY YELLOW BRASS

- Capacity of 200mt/month
- Iron Free, Free of amunitions
- free of manganese-bronze, aluminum- bronze, unsweated radiators or radiator parts
- Price LME to be determined upon badge qualiti



HONEY BRASS

- Capacity of 400mt/month
- Max 10% Faucets, and 4% Iron/Plastics
- Price 62% LME

ZURIK CU (ELMOS)

- Capacity of 3000mt/month
- Non ferrous from elmos shredding

Cu	Al	Brass	Fe	Precious Metals
63-65%	10-12%	1%	9-11%	0,1-0,2%

Rest impurities

WHERE WE ARE

C/ Montcorb s/n, 17241

Riudarenes (Girona)

Phones: **972 164 653 - 617 470 379**

Email: **info@acinrm.com**

Website: **www.acinrm.com**



AT ACIN RECYCLING METALS YOU WILL FIND:

- Reception and storage of metals
- Classification area
- Pressing or cutting area
- Storage area for pressed or sheared metals
- Waste storage areas

WE COLLECT, MOVE, SEPARATE, PROCESS, IMPORT AND EXPORT COPPER.

**Find out what we can do for you.
When we recycle copper...
Our clients win.
The planet too.**

ACiN
recycling metals





POWER THROUGH TECHNOLOGY

WWW.ACINRM.COM

